



**“FORESTS AND CLIMATE
CHANGE: ECUADOR’S SOCIO
BOSQUE PROGRAM”**

Ministry of Environment
Government of Ecuador



BACKGROUND INFORMATION

- Located in Southamerica, on the *equator*
- Total area of 26 million hectares
- Divided into 24 provinces, cantons and parishes.





- Ecuador is one of 17 mega diverse countries
- 46 ecosystems represented
- 2 Hotspots: “Tropical Andes” and “Tumbes-Chocó-Magdalena”
- Ecuador represents 0.2% of the world’s surface and contains:
 - 18% of bird species
 - 18% of orchids
 - 10% of amphibians
 - 8% of mammals



FORESTS IN ECUADOR

- 9.5 million hectares of native forests (38% of Ecuador's total surface)
 - Humid tropical forest
 - Montane forest
 - High altitude Andean forest (Páramo)
 - Mangroves
 - Dry forest
- Aproximately 60.000 hectares are lost annually
- About 55 million tons of CO2 emissions caused by deforestation per year



POLICY FRAMEWORK

Constitution recognizes legally enforceable rights of Nature.

It includes specific mandates to protect biodiversity and mitigate climate change

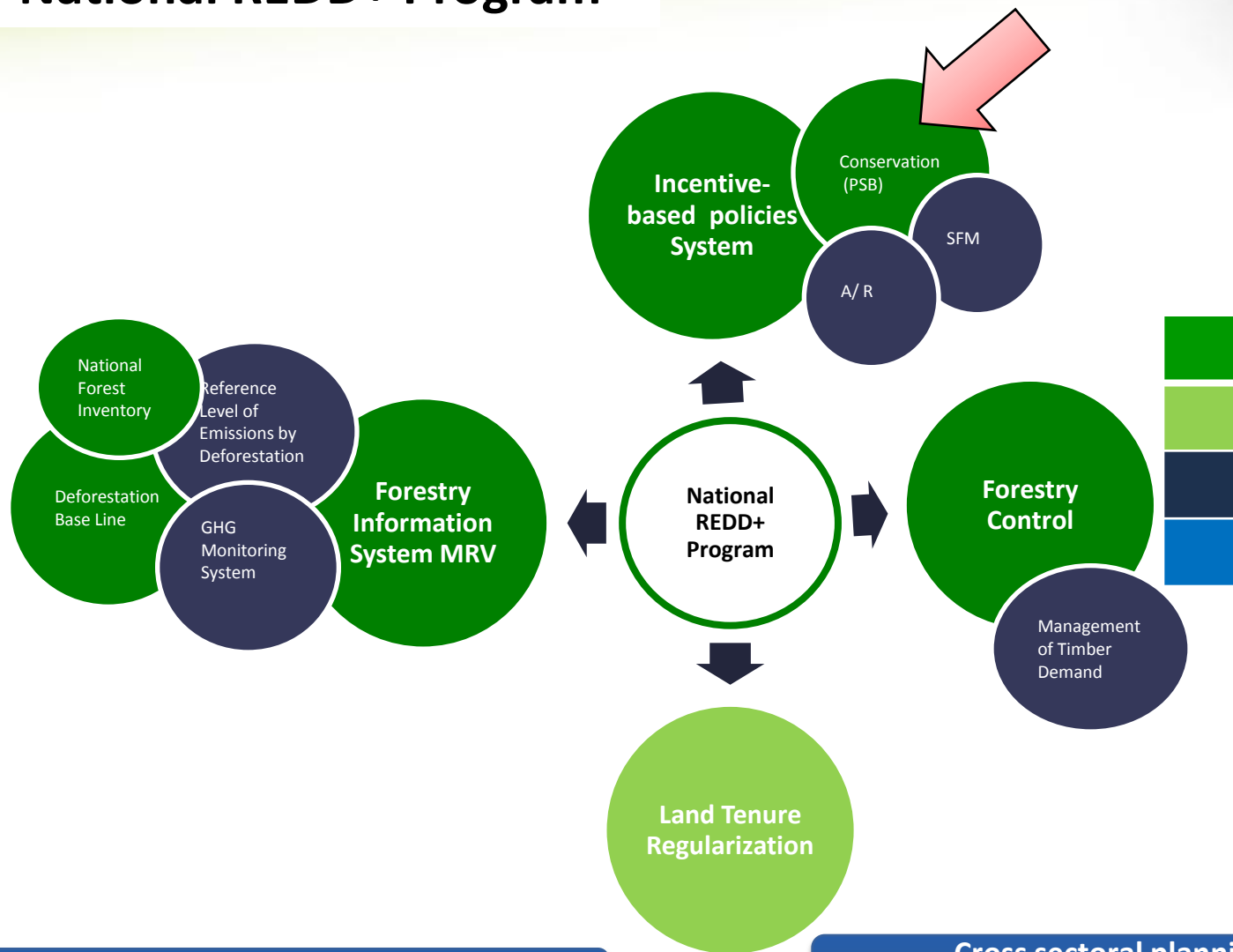
➤ National Development Plan (2009-2013): Reduce deforestation by 30% over the next 4 years.



➤ September of 2008 → Launching of the Socio Bosque Program



National REDD+ Program



Competences MAE	On going activities
Competences MAE - MAGAP	
	Planned Activities
	Cross cutting elements

Legal, Financial & Institutional Framework

Cross sectoral planning & inter-institutional coordination

Financial Sustainability

Research

Multiple benefits

Multi-Stakeholder Engagement

WHAT IS SOCIO BOSQUE?

SocioBosque



Programa de protección de bosques

- National conservation incentive program
- Direct yearly payments per hectare of native forest or other native ecosystems to individual and collective landowners who protect these forests
- Voluntary scheme
- Conditional on compliance of conservation





OBJECTIVES

- Protect 4 million hectares of forests and other native ecosystems, and their ecological, economic, and cultural values.
- Reduce deforestation rates & their associated GHGs emissions.
- Improve the livelihoods of those who protect forests, mainly the poorest rural communities of the country

POTENCIAL PARTICIPANTS

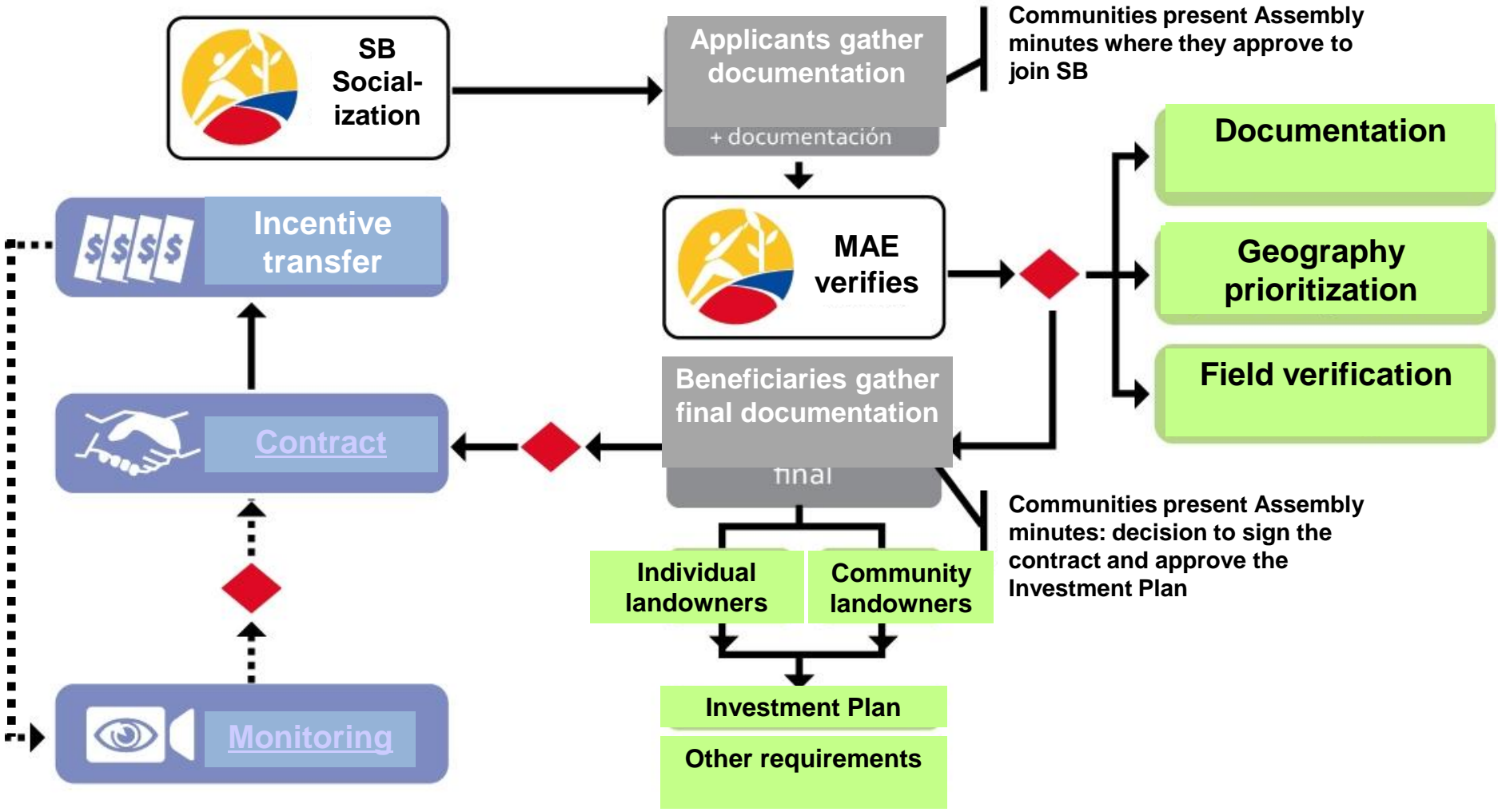
- Landowners of native forests, “páramos”, and other native vegetation
- Title of property
 - ✓ Individual landowners
 - ✓ Collective/community landowners: indigenous and non-indigenous communities, associations, cooperatives
 - ✓ National System of Protected areas (SNAP)



Socio Bosque Incentive Scales

Individual with more than 20 hectares in global property title			Individuals with 20 hectares or less in their global property title			Collective Organizations in Forests			Collective Organizations in Páramos		
Hectare Range		Dollar value	Hectare Range		Dollar value	Hectare Range		Dollar value	Hectare Range		Dollar value
1	50	\$30.00	1	20	\$60.00	1	50	\$35.00	1	50	\$60.00
51	100	\$20.00				51	100	\$22.00	51	100	\$40.00
101	500	\$10.00				101	500	\$13.00	101	500	\$20.00
501	5,000	\$5.00				501	5,000	\$6.00	501	5,000	\$10.00
5,001	10,000	\$2.00				5,001	10,000	\$3.00	5,001	10,000	\$4.00
more than 10,001		\$0.50				more than 10,001		\$0.70	more than 10,001		\$1.00

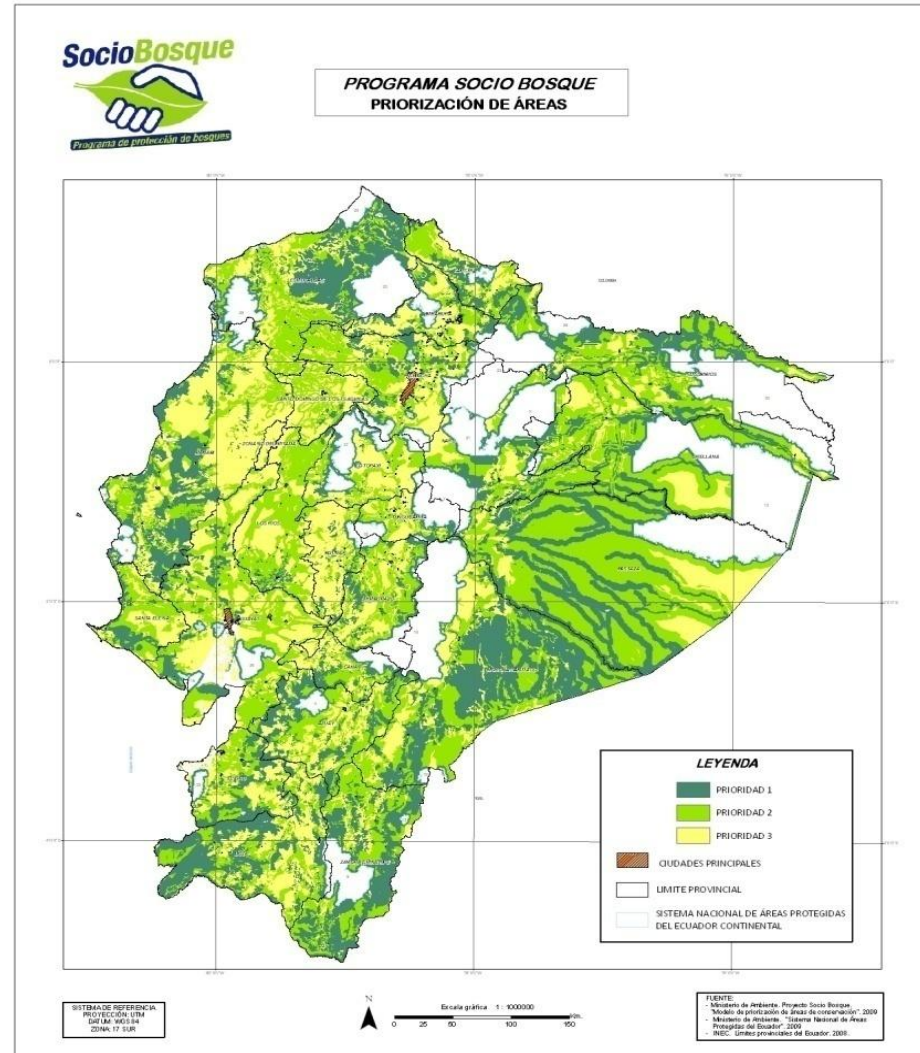
OPERATION





MAP OF PRIORITIZATION

- Areas with high deforestation threats
- Areas with high importance for ecosystem services:
 - *Biodiversity*
 - *Water*
 - *Carbon storage*
- Areas with high poverty levels



CONTRACTS

- 20 year duration
- Prohibit the change of land use in the area under conservation
 - No logging
 - No burning
 - No commercial hunting or fishing
- Inform Socio Bosque of any invasions or changes in the area



MONITORING



Area under conservation

- Field Visits: transects
- Remote sensors, aerial photography and satellite images



- Sworn statements on compliance of contracts
- Control and monitoring training for community forest rangers

RESULTS UNTIL OCT. 2011



Ministerio
del Ambiente

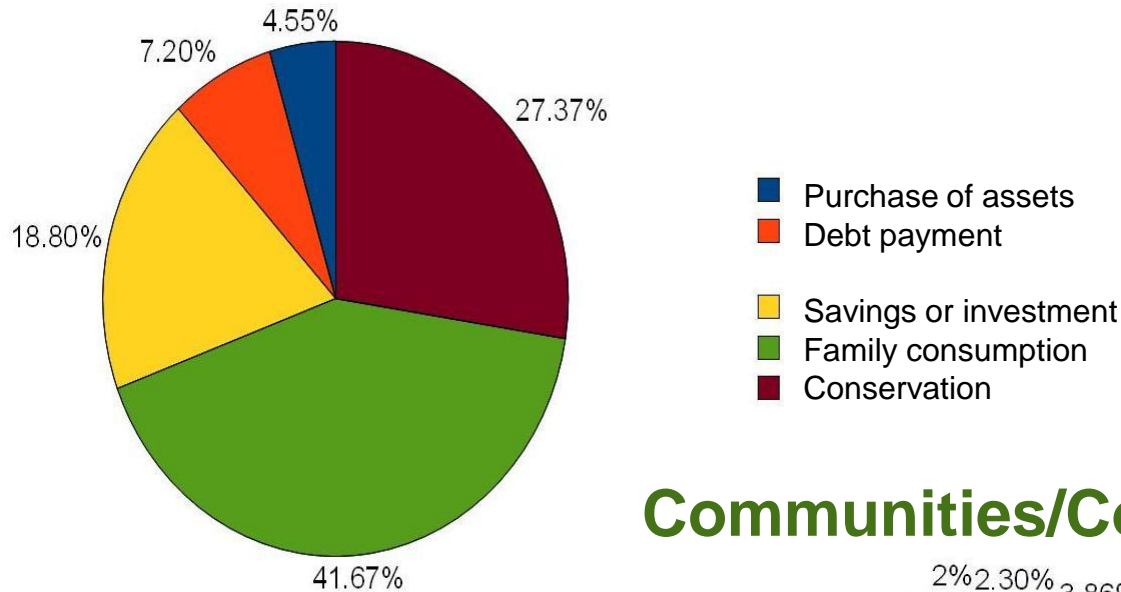


Contracts	1.405
Number of hectares	868.235
Incentives	3.850.969
Beneficiaries	67.409

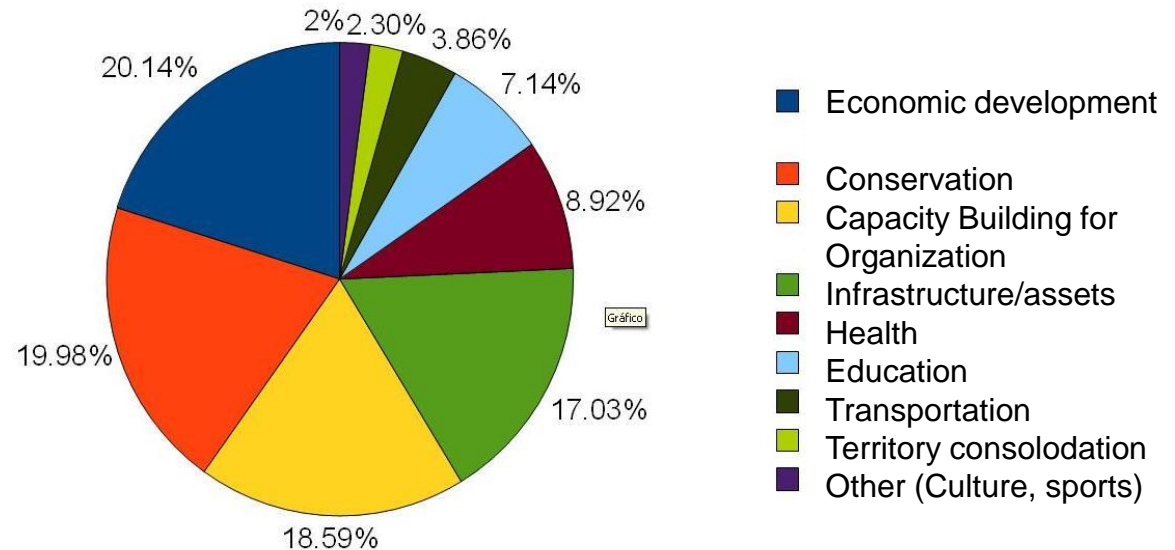


Areas of investment (average)

Individuals



Communities/Colectives



MONITORING

Investment Plans





Conservation

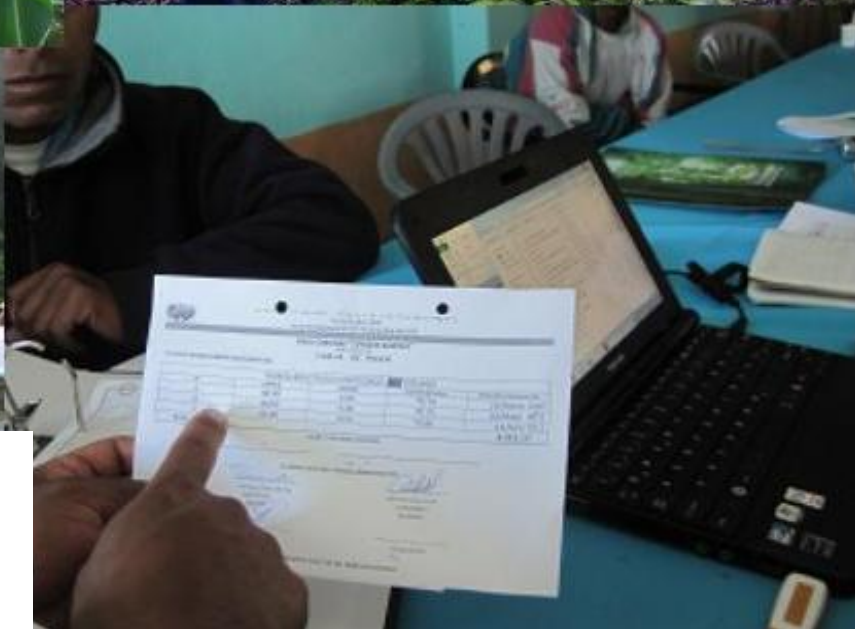




io
iente

Social & Cultural Development





Economic Development



Capacity Building



FINANCIAL SUSTAINABILITY

- Public funds
- International Cooperation (e.g. KFW with €7 MM 2011-2014)
- A possible REDD+ mechanism
- Exploring other funds: Private sector



Socio Bosque

*"A compromise of the government with climate,
forests and its people"*

www.ambiente.gob.ec

*Un compromiso del Gobierno de la Revolución
Ciudadana con el clima, los bosques y su gente*