

# Background Paper (number 3)

## Opportunities and Constraints for Investing in Forests and Trees in Landscapes

By

Chris Buss (*IUCN*)

Dominic Elson (*Trevaylor*)

Duncan Macqueen (*IIED*)

Carole Saint-Laurent (*IUCN*)





# IT'S NOT JUST ABOUT THE TREES

---

Presentation to Investment Forum on Mobilizing Private Investment in Trees and Landscape Restoration in Africa

Dominic Elson, Trevaylor Consulting

26<sup>th</sup> May 2011

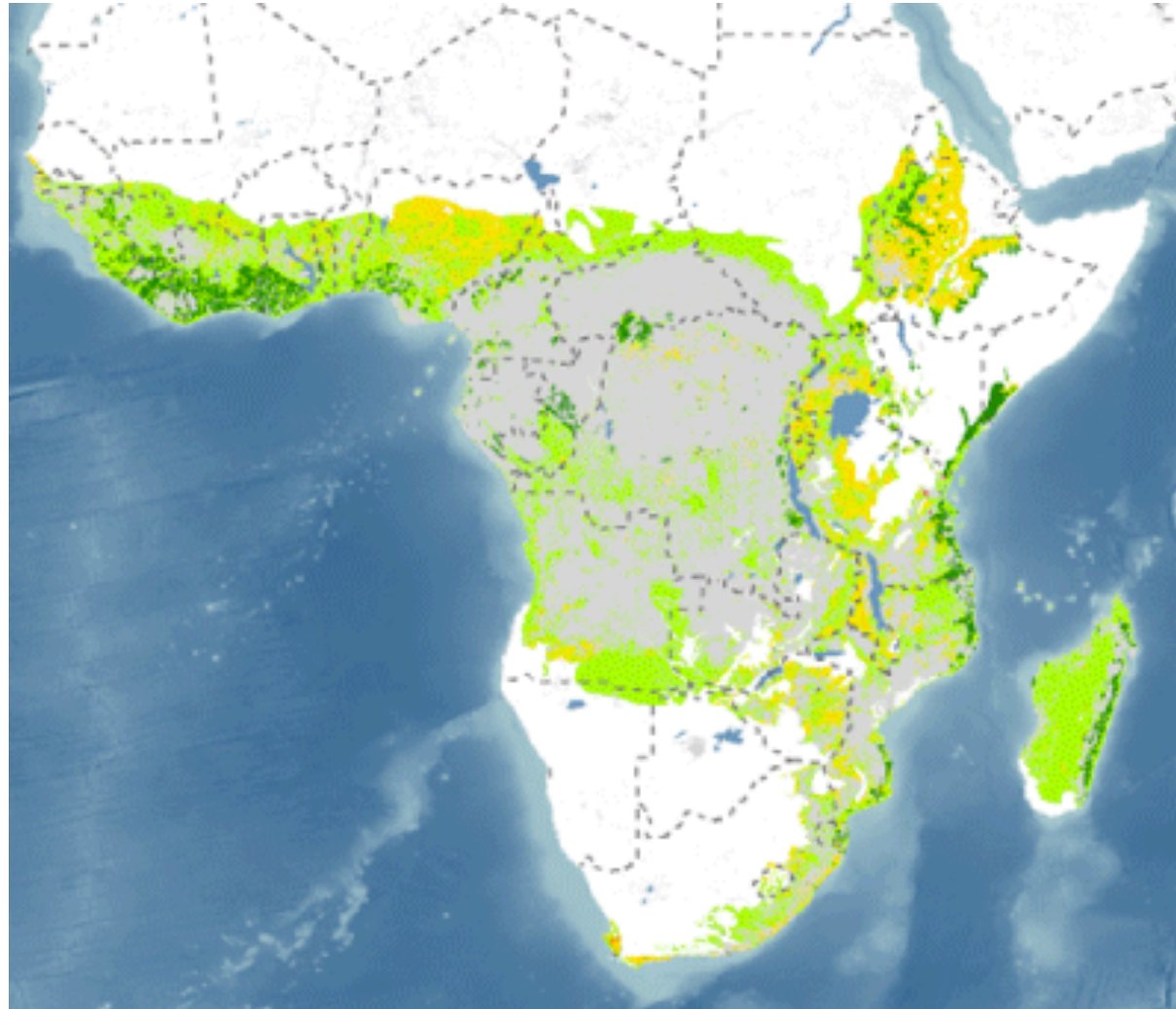
[dominicelson@me.com](mailto:dominicelson@me.com)

# Overview

- Options for investing in landscapes & natural resources
- Importance of the 'missing middle'
- The Triple Bottom Line
- Who are the investors & what do they want?
- Will money solve our problems?
- Constraints
- Opportunities
- Getting organized

# Landscape restoration options

Is it just about scale, boosting GDP and food production?



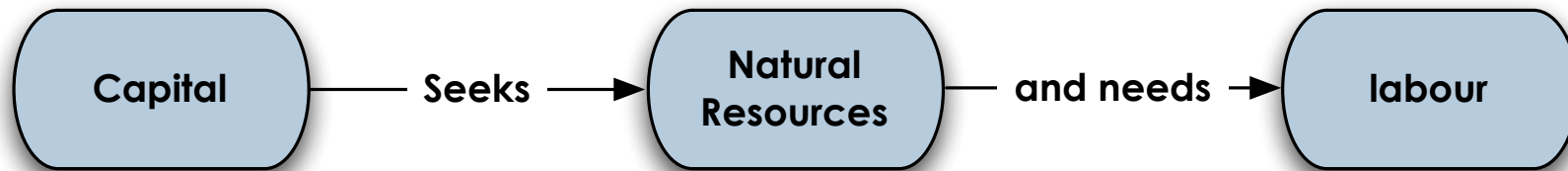
# Landscape restoration options

Is it just about scale, GDP and boosting food production?

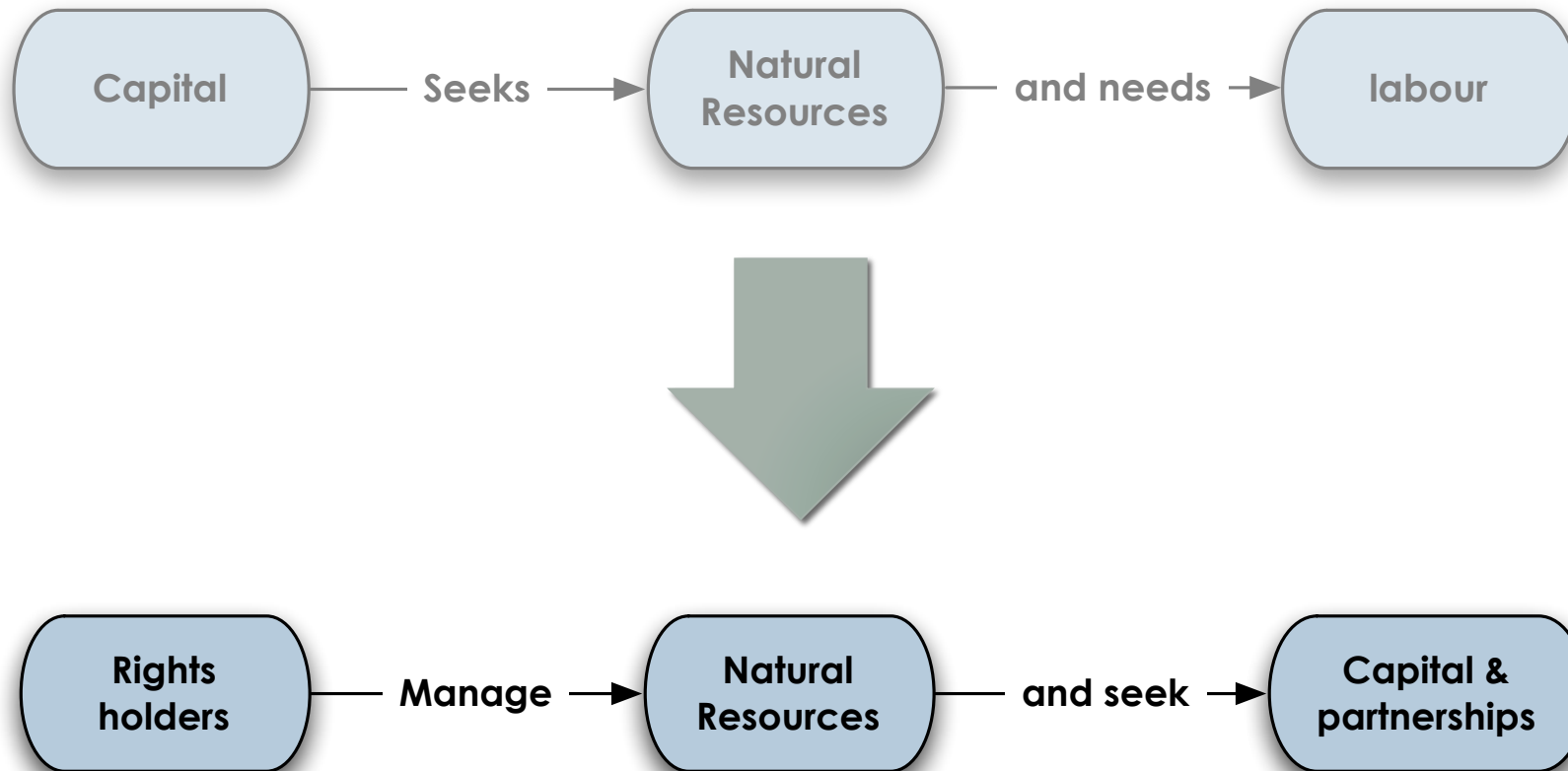
You get the investors you deserve...



# Changing the resource-led system



# Rights-based system



# SMEs drive the economy

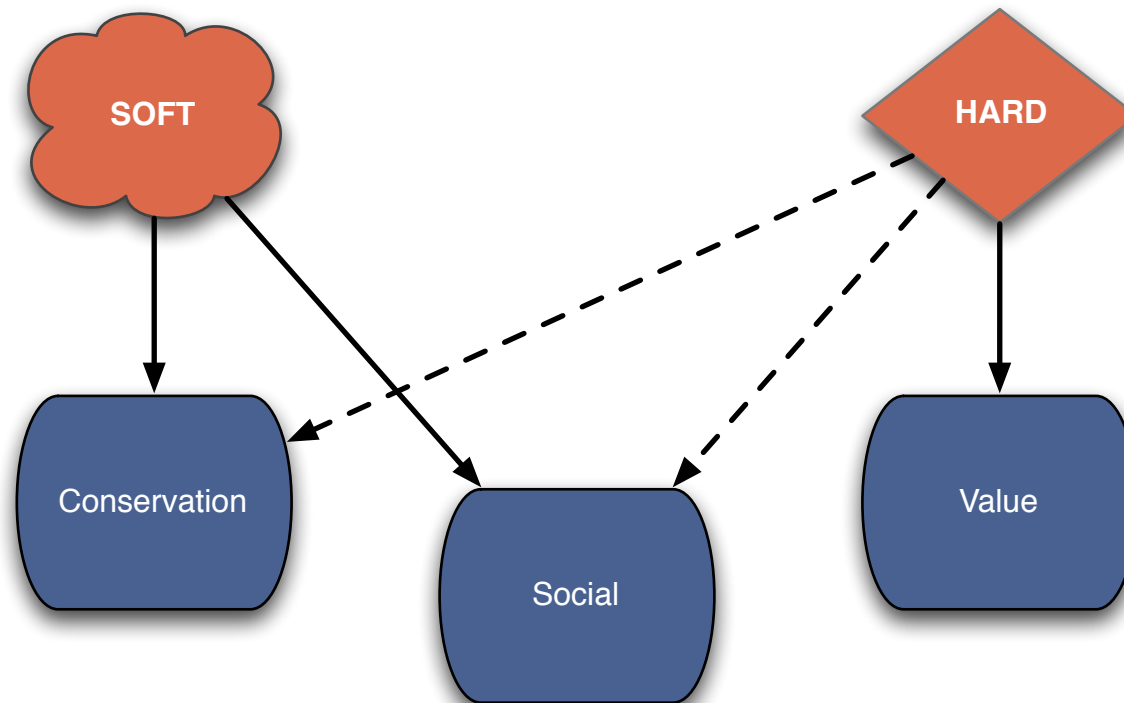


## Triple Bottom Line

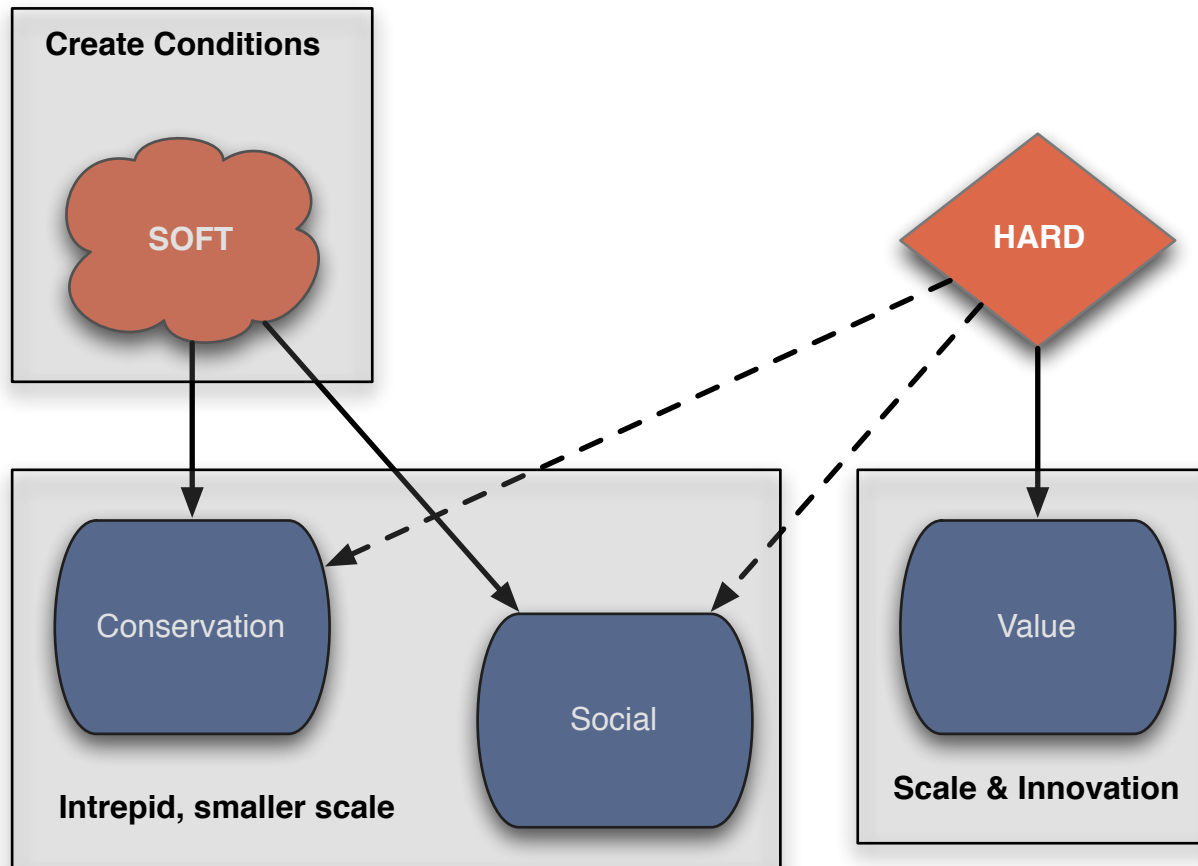
Is it really just about  
compensation and  
benefit sharing?



# Investor Typology



# Investor Typology (roles)



If only it was just about the money...



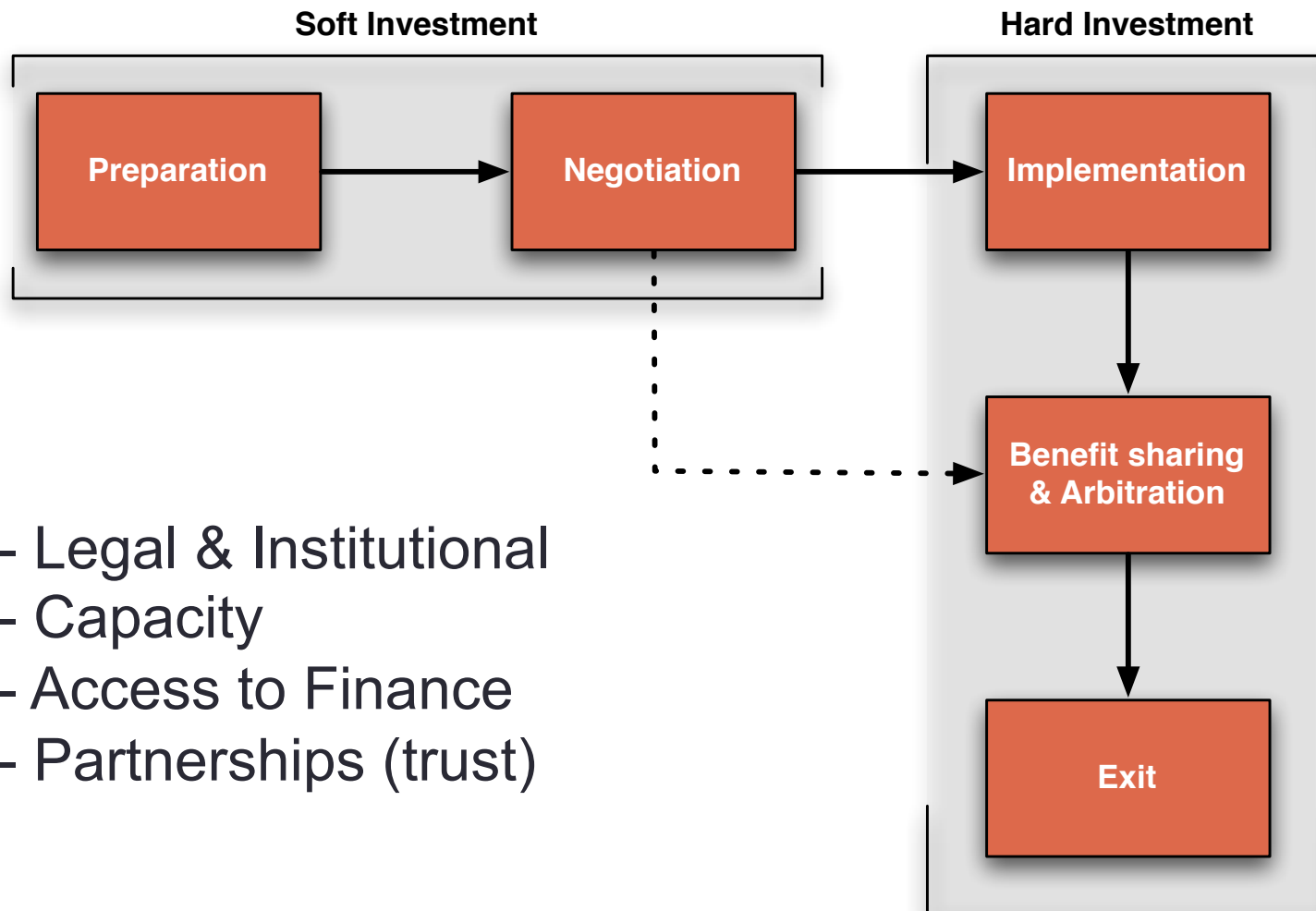
# Constraints

- Institutional Quality
  - Governance
  - Tenure & Rights (Whose rights...?)
- Investible Entity
- Organizational capacity
- Misunderstanding the value chain
  - Good coyote / bad coyote

# Are partnerships the answer?



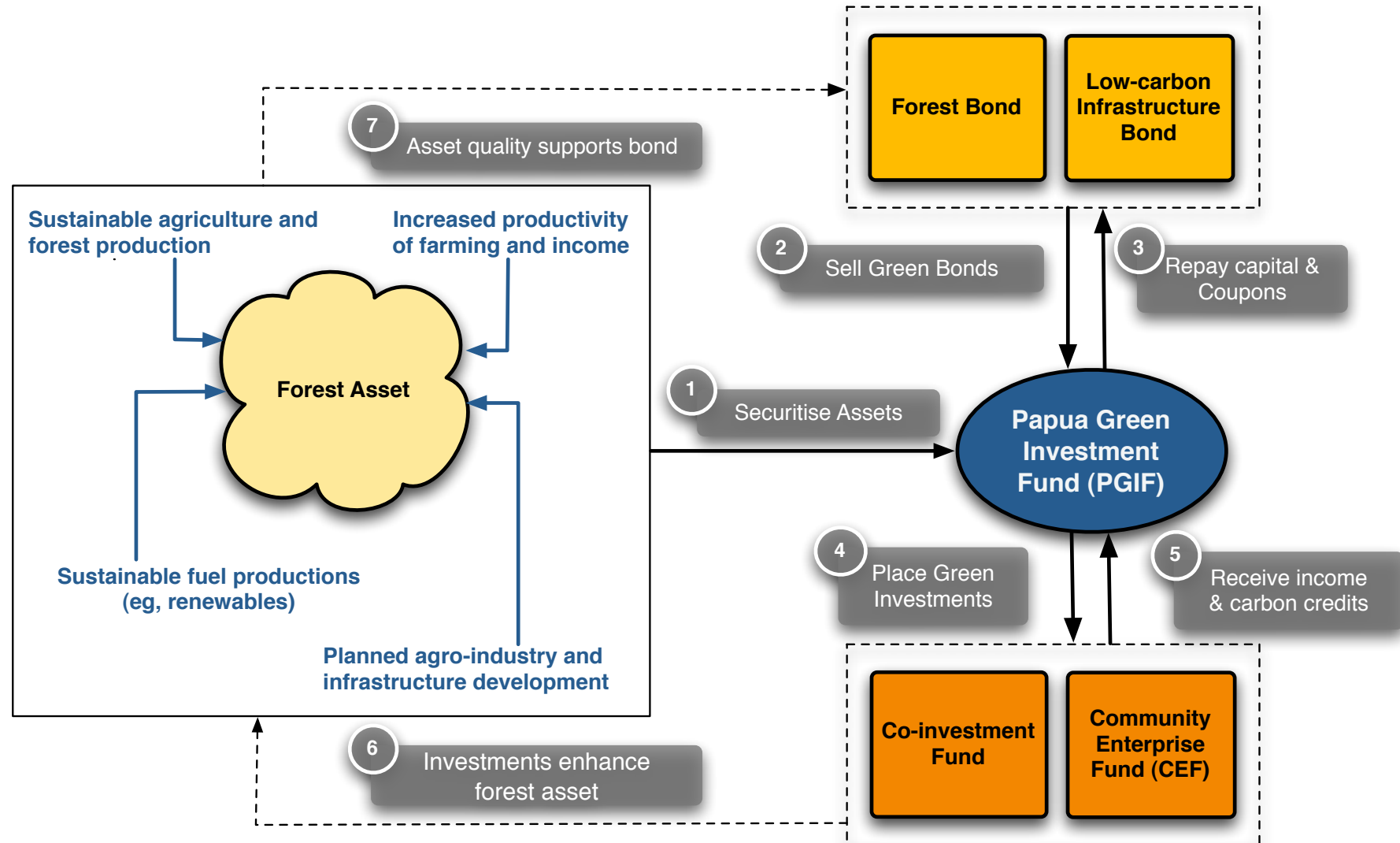
# Opportunities to improve the Process



- Legal & Institutional
- Capacity
- Access to Finance
- Partnerships (trust)

# Where to put the money

This is an example from Papua Province, Indonesia. Please do not reproduce.



# Let's get organized

*“Don't organize people, give them the incentive to organize themselves”*

Companies are social organizations born out of the need to spread risk and raise capital.





---

Thank You.

